

FOR LEASE
4601
BULLS BAY HWY
BUILDING 200

WESTSIDE
TRAILER STORAGE



50 TRAILER SPACES

PROPERTY HIGHLIGHTS

ACRES Approximately 1.22 Acres

SPACES Up to 50 Trailer spots

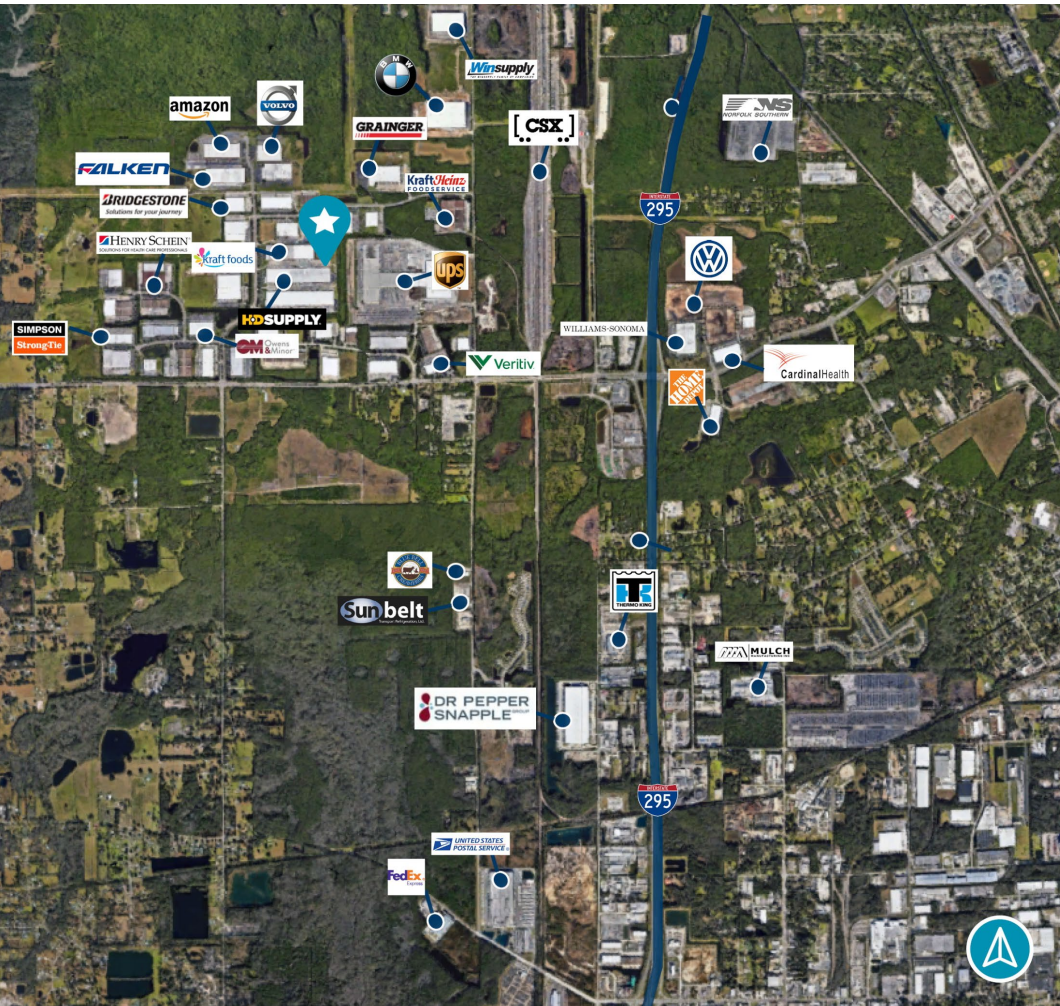
ASKING RENT \$4,000 / mo NNN

LOCATION HIGHLIGHTS

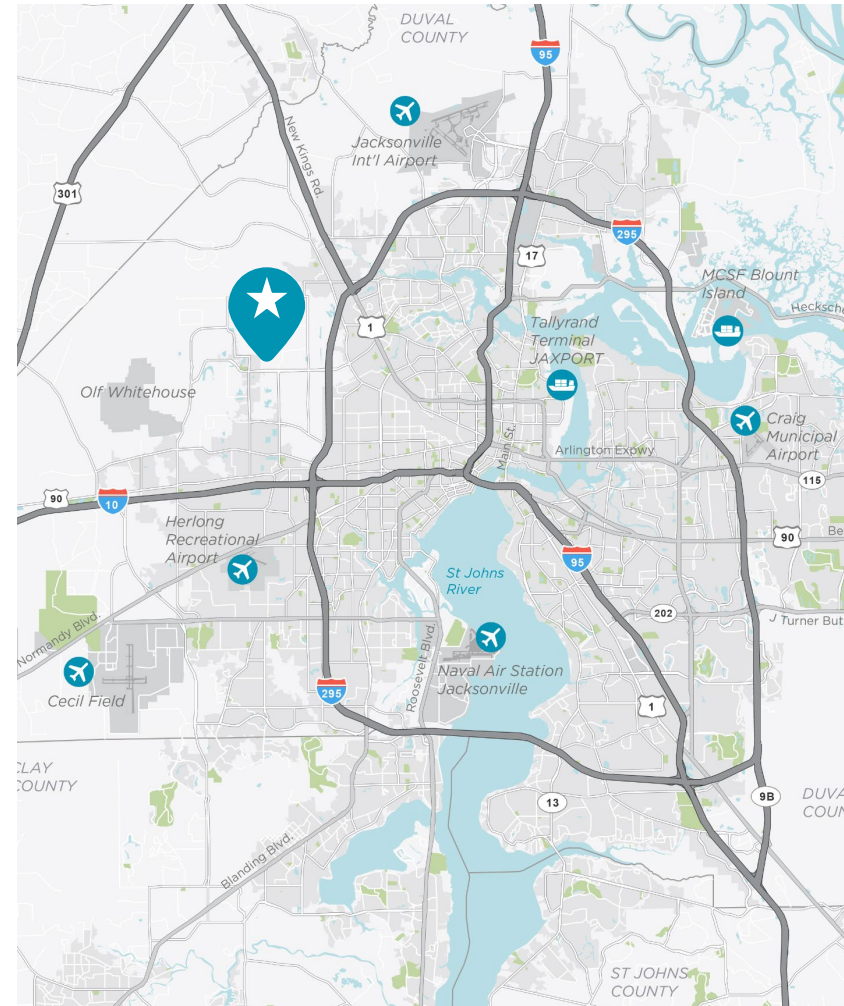
4601 BULLS BAY HWY is located within the Westside Industrial Submarket. The westside is the traditional location for most **LOGISTICS** firms in the region due to convenient **ACCESSIBILITY** to all three major interstates including the **I-295** Beltway System, **I-10**, the **JAXPORT** Blount Island Marine Terminals and the **JACKSONVILLE INTERNATIONAL AIRPORT**. The Property's unique location in the southeast region provides access to a population of over **55 MILLION RESIDENTS** within a **8-HOUR DRIVE**, reaching both Miami and Atlanta.

TRAILER STORAGE FOR LEASE

CORPORATE NEIGHBORS



AREA MAP



Contact Info

TYLER NEWMAN
Executive Director
Tyler.Newman@cushwake.com
+1 904 380 8336

JACOB HORSLEY
Executive Director
Jacob.Horsley@cushwake.com
+1 904 380 8335

CUSHMAN & WAKEFIELD of FLORIDA, LLC
121 W. Forsyth Street, Suite 900
Jacksonville, FL 32202
+1 904 731 9500
cushmanwakefield.com

